

# Angels

Robbie Williams

♩ = 150

First musical staff, measures 1-9. Key signature: two sharps (F# and C#). Time signature: 4/4. The staff begins with a whole rest, followed by a series of eighth and quarter notes.

10

Musical staff 2, measures 10-16. Continues the melodic line with eighth and quarter notes.

17

Musical staff 3, measures 17-24. Features a sequence of eighth notes and quarter notes.

25

Musical staff 4, measures 25-32. Continues the melodic progression.

33

Musical staff 5, measures 33-39. Includes a triplet of eighth notes.

40

Musical staff 6, measures 40-46. Features a triplet of eighth notes.

47

Musical staff 7, measures 47-53. Continues the melodic line.

54

Musical staff 8, measures 54-61. Includes a triplet of eighth notes.

62

Musical staff 9, measures 62-69. Continues the melodic progression.

70

Musical staff 10, measures 70-77. Includes a triplet of eighth notes.

78

Musical staff 11, measures 78-85. Ends with a triplet of eighth notes.

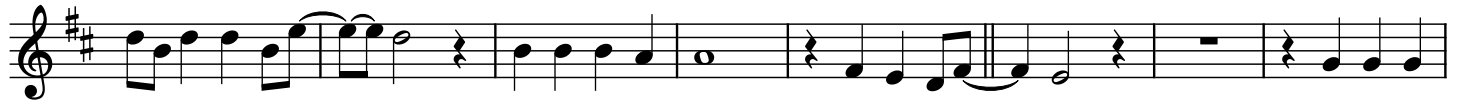
85



93



100



108



117



126



135



143



150

♩ = 145



158

♩ = 135

♩ = 125

♩ = 120

