

L'aventurier

indochine

$\text{♩} = 180$

ppp *pp*

6 *p*

9 *mp* *mf*

13 *f* *ff* *fff*

17

21

25

29

33

37

Detailed description: The score is written for a single melodic line in treble clef, G major (one sharp), and 4/4 time. It begins with a tempo marking of quarter note = 180. The first five staves (measures 1-17) consist of a continuous sequence of eighth-note patterns that ascend and then descend, with dynamic markings *ppp*, *pp*, *p*, *mp*, *mf*, *f*, *ff*, and *fff* indicating a crescendo. At measure 17, the music changes to a more rhythmic pattern of quarter and eighth notes, marked with a repeat sign. This pattern continues through measures 21, 25, 29, and 33. The piece concludes at measure 37 with a final repeat sign.

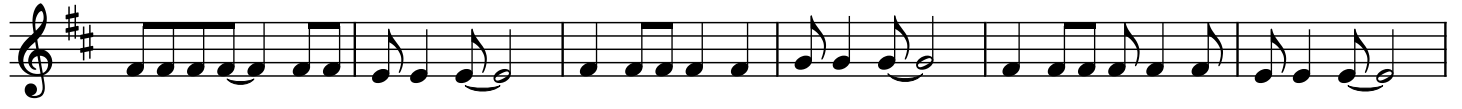
41



45



51



57



63



65



69



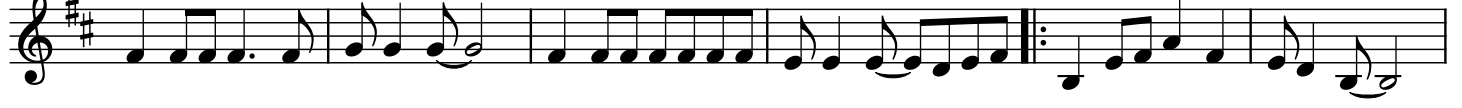
73



77



81



87

